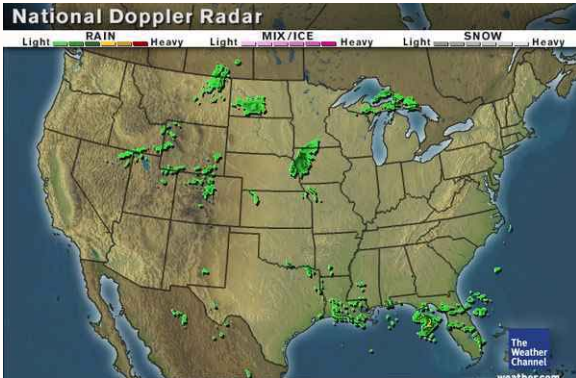




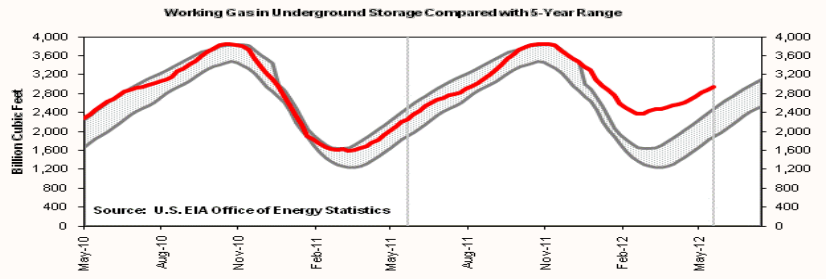
Market Update & Outlook



Weather:

- High pressure dominates the region providing beautiful weather the next few days.
- Breezy conditions along the southern New England and Mid-Atlantic coast. Watch out for dangerous rip current potential.
- A few stray showers or thundershowers are possible both this afternoon and Saturday afternoon around the mountains of northern New York and northern Pennsylvania.
- High temperatures should be in the 60s and 70s along the coastal Plain with upper 70s and 80s expected inland from upstate New York to Virginia.

Storage to compare with 5 year range: Working gas in storage was 2,944 Bcf as of Friday, June 8, 2012, according to EIA estimates. This represents a net increase of 67 Bcf from the previous week. Stocks were 708 Bcf higher than last year at this time and 666 Bcf above the 5-year average of 2,278 Bcf. In the East Region, stocks were 334 Bcf above the 5-year average following net injections of 43 Bcf.



Nymex Natural Gas 12 Month Forward Average



Market Watch: At the NYMEX, the July 2012 contract fell from \$2.421 per MMBtu last Wednesday to \$2.185 per MMBtu yesterday, a decrease of 23.6 cents per MMBtu (9.7 percent) over the period. The July 2012 contract led the futures market decline with a 9.7 percent loss on expectations that hotter weather (and greater consumption) was still elusive. The 3-Month Strip (average of July-August-September contracts) followed suit with a 23.8 cent per MMBtu (9.6 percent) loss for the week

Check out our new website at www.rileynaturalgas.com

Natural Gas Nymex Trading 6/14/12

Month	High	Low	Last	Change
Jul'12	\$2.495	\$2.215	\$2.495	\$0.310
Aug'12	\$2.541	\$2.541	\$2.541	\$0.305
Sep'12	\$2.579	\$2.579	\$2.579	\$0.298
Oct'12	\$2.667	\$2.667	\$2.667	\$0.285
Nov'12	\$2.918	\$2.918	\$2.918	\$0.235
Dec'12	\$3.198	\$3.025	\$3.198	\$0.192
Jan'13	\$3.345	\$3.345	\$3.345	\$0.185
Feb'13	\$3.364	\$3.364	\$3.364	\$0.182

Crude Oil Nymex Trading 6/14/12

Month	High	Low	Last	Change
Jul'12	\$83.91	\$83.91	\$83.91	\$1.29
Aug'12	\$84.22	\$84.22	\$84.22	\$1.30
Sep'12	\$84.50	\$84.50	\$84.50	\$1.31
Oct'12	\$84.76	\$84.76	\$84.76	\$1.28
Nov'12	\$85.08	\$85.08	\$85.08	\$1.25
Dec'12	\$85.39	\$85.39	\$85.39	\$1.22
Jan'13	\$85.66	\$85.66	\$85.66	\$1.18
Feb'13	\$85.88	\$85.88	\$85.88	\$1.13

June Indices

June Nymex - \$2.429
 Columbia Gas Transmission- \$2.430
 Dominion Transmission- \$2.440
 Indices are the first of the month Index as published by Inside F.E.R.C.'s Gas Market Report.

Natural Gas Nymex Strip Prices

Strip	High	Low	Last	Change
6 mo	\$2.733	\$2.658	\$2.733	\$0.271
12 mo	\$3.042	\$3.004	\$3.042	\$0.220
Summer 12	\$2.571	\$2.501	\$2.571	\$0.300
Winter 12	\$3.233	\$3.199	\$3.233	\$0.194