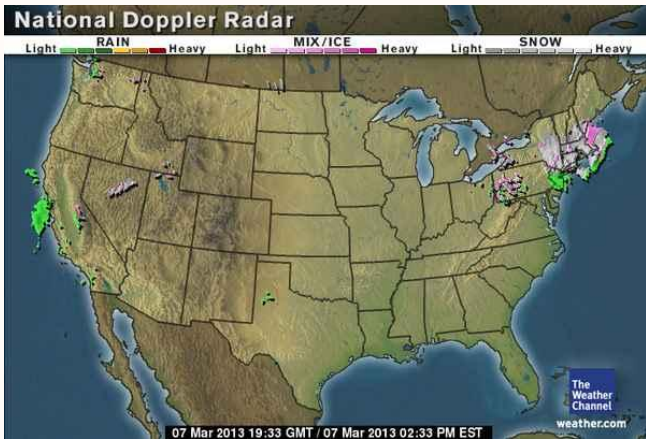




Riley Natural Gas Company

Energy Commodities Update For Close of Business March 7, 2013

Market Update & Outlook



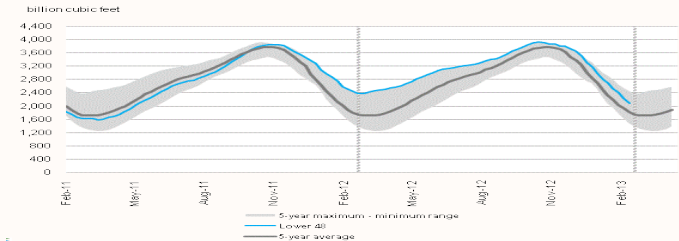
Weather:

- Winter Storm Saturn targets into the Northeast with rain/wind and heavy snow into Friday.
- The heaviest snow, 6-12", will likely fall from southern NH into parts of eastern MA northern/eastern CT and much of Rhode Island.
- Lesser amounts will extend back into the Hudson Valley, Long Island, northern New Jersey and eastern Pennsylvania.
- Boston is set to receive 8-12", NYC 2-4" and Providence 5-8".
- Some snow, minor accumulations, may back into Pennsylvania and New Jersey, including PHL, tonight and early Friday.
- The strong winds, coastal flooding, pounding surf and beach erosion move into New England today and linger there into Friday afternoon.
- Some moderate to major coastal flooding around the MA coast (Friday AM) at high tide.
- Precipitation should wind down after midday Friday.

Check out our new website at www.rileynaturalgas.com

Storage to compare with 5 year range: Working gas in storage was 2,083 Bcf as of Friday, March 1, 2013, according to EIA estimates. This represents a net decline of 146 Bcf from the previous week. Stocks were 361 Bcf less than last year at this time and 269 Bcf above the 5-year average of 1,814 Bcf. In the East Region, stocks were 73 Bcf above the 5-year average following net withdrawals of 77 Bcf.

Working gas in underground storage compared with the 5-year maximum and minimum



Nymex Natural Gas 12 Month Forward Average



Market Watch: At the New York Mercantile Exchange, the April 2013 near-month contract rose slightly from \$4.434 per MMBtu last week to \$3.470 per MMBtu yesterday. While still relatively low, prices are considerably greater than levels last April. The April 2012 contract at this time last year was trading around \$2.300 per MMBtu. This week, the 12-month strip (the average of the contracts between April 2013 and March 2014) increased slightly from \$3.725 per MMBtu to \$3.761 per MMBtu.

Natural Gas Nymex Trading 3/07/13

Month	High	Low	Last	Change
Apr'13	\$3.582	\$3.500	\$3.582	\$0.112
May'13	\$3.627	\$3.627	\$3.627	\$0.108
Jun'13	\$3.673	\$3.673	\$3.673	\$0.105
Jul'13	\$3.724	\$3.724	\$3.724	\$0.100
Aug'13	\$3.747	\$3.747	\$3.747	\$0.094
Sep'13	\$3.751	\$3.751	\$3.751	\$0.093
Oct'13	\$3.779	\$3.779	\$3.779	\$0.091
Nov'13	\$3.874	\$3.874	\$3.874	\$0.083

Crude Oil Nymex Trading 3/07/13

Month	High	Low	Last	Change
Apr'13	\$91.56	\$91.56	\$91.56	\$1.13
May'13	\$92.03	\$92.03	\$92.03	\$1.13
Jun'13	\$92.40	\$92.40	\$92.40	\$1.10
Jul'13	\$92.62	\$92.62	\$92.62	\$1.05
Aug'13	\$92.67	\$92.67	\$92.67	\$0.99
Sep'13	\$92.57	\$92.57	\$92.57	\$0.93
Oct'13	\$92.36	\$92.36	\$92.36	\$0.87
Nov'13	\$92.09	\$92.09	\$92.09	\$0.82

March Indices

March Nymex - \$3.427

Columbia Gas Transmission- \$3.470

Dominion Transmission- \$3.410

Indices are the first of the month Index as published by Inside F.E.R.C.'s Gas Market Report.

Natural Gas Nymex Strip Prices

Strip	High	Low	Last	Change
6 mo	\$3.684	\$3.670	\$3.684	\$0.102
12 mo	\$3.849	\$3.842	\$3.849	\$0.089
Summer 13	\$3.698	\$3.686	\$3.698	\$0.100
Winter 13-14	\$4.062	\$4.062	\$4.062	\$0.072